

Product	Document type	Release #	SAP/Doc number	Release date
DVR 600 Series	Release notes	V2.0.2		2012.04.20

Video Recorder 600 Series new firmware version

1 DVR 600 Series firmware version 2.0.2 (date 2012-04-20)

File name: 600series.bin (2012-04-20)

This release includes the following bug fixes:

- Export via web access is not possible when logged-on as 'Advanced User' or 'Normal user' that has rights for export. Always an error is stating that the export file contains 0MB. This has been solved.
- Changing the additional "Normal user settings (like allow playback, search) via the web access was not possible. This is also solved in this release.
- The status information (like video loss, motion alarm, log-on,..) is not shown at the bottom of the Control Center 3.35 in combination with v2.0.1. This is corrected in v2.0.2.

Note 1

Issue: Web access log-on as "Normal user" that has rights for playback. Still the playback icon is grayed out and cannot be pressed.

Solution: You can select additional rights for Play, Search, Export and Alarm acknowledge for a "Normal user". However to give additional 'Play' rights you also have to give additional 'Search' rights. You cannot have 'Play' rights without also having 'Search' rights activated.

Note 2

Issue: Uploading DVR 400/600 firmware via webpage using IE, can cause unexpected error message "DVR update file contains errors" as result of IE security settings.

Solution: Enable "Include local directory path when uploading files to a server".

In IE9 this setting can be found in "tools", "Internet options", "Security", "Custom level", "Miscellaneous", "Include local directory path when uploading files to a server". Enable this setting to make uploading DVR400/600 firmware possible.

Note 3

The CC only shows maximum one event per second. So if more events are generated within one second only the last event is shown. On the local unit always all events are shown.

Bosch strongly recommends upgrading to the latest firmware to achieve the best possible functionality, compatibility and performance.

2 Update procedure

To update the DVR 600 Series to the latest firmware, please refer to the Video recorder 600 Series Operation Manual, chapter 6.6.5 or follow instructions below:

1. Put firmware v2.0.2 via a PC on the root of a USB memory stick (file name: 600series.bin [date 2012-04-20])
2. Insert the USB stick into the front USB connector of the DVR
3. Log on as “ADMINISTRATOR” in the local unit
4. Select **Menu** and go to the “System > Configuration” screen
5. Select **Update firmware** to upgrade the DVR software. In this case, the current DVR settings and video will not be deleted or replaced during the update process.

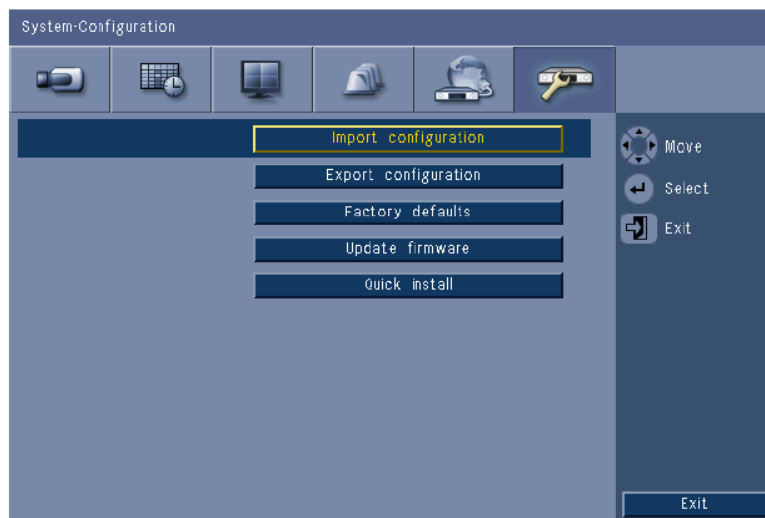


Figure: Update firmware menu

6. Select **OK** to begin the update process or click **Cancel** to stop and exit. After the update process is completed you have to press **OK** so that the system will automatically restart.

Alternative a firmware upgrade can be performed via the Web Client:

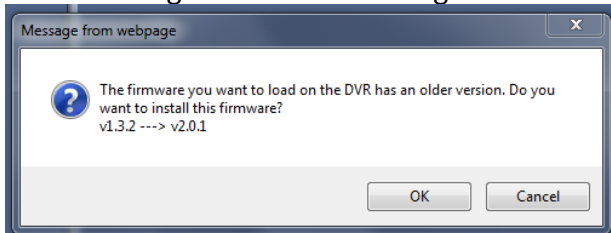
- Open Internet Explorer and type on the address bar the network IP address of the unit
- Log on by entering the User ID (default ADMINISTRATOR) and Password (default 000000)
- Select the configuration mode by clicking on the “Configuration” button
- Select ‘System’ and then ‘Configuration’
- Browse to the v2.0.2 firmware file name “600series.bin” (date 2012-04-20)
- Press the “Update” button

Firmware will be automatically updated and unit will be restarted.

Security Systems

Product DVR 600 Series	Document type Release notes	Release # V2.0.2	SAP/Doc number	Release date 2012.04.20
---------------------------	--------------------------------	---------------------	----------------	----------------------------

Note: When upgrade from v1.3.2 to v2.0.1 or v2.0.2 via the Web Client, below message is shown. Please ignore this message and press OK.



3 DVR 600 Series firmware version history

3.1 Version 1.1.0

File name: 600series.bin (2010-11-30)

Initial firmware version

3.2 Version 1.2.0

File name: 600series.bin (2011-03-28)

This release includes the following improvement:

- PC application support (CC v3.32) of DVR 600 Series with firmware version 1.2.0.

3.3 Version 1.3.2

File name: 600series.bin (2011-09-27)

This release includes the following improvement:

- Improve dome control using Intui keyboard.
 - Immediate dome control when full screen is selected for cameras assigned for dome control.
- Quad image performance on Mon. A improved (diagonal lines were more jagged than in other multiscreens).
- Mon. B image performance improved (shown some flickering by certain monitor/camera combinations)
- Setting added to Auto delete video older than 3 days. For some countries this is required by law.
- SMTP port number was default on 587 when SSL is enabled.
 - This port number is now user selectable.

This release includes the following bug fixes were below issues are solved:

Product	Document type	Release #	SAP/Doc number	Release date
DVR 600 Series	Release notes	V2.0.2		2012.04.20

- In low or unstable network configurations the DVR sometimes block any network user access until the unit was power cycled.
- It was not possible to record a tour in G3 domes via DVR.
- DVR was losing network gateway in some network applications.
- Network connection was not possible immediately after network disconnect.
- DVR ID in web pages showed one number higher than set in DVR.
- DVR rebooted after a number of smart search actions in web interface.

3.4 Version 2.0.2

File name: 600series.bin (2012-03-23)

This release includes the following improvement:

- Web browser support for DVR 600 Series on IE9
- Option to avoid ICMP ping with Control Center (requires CC release v3.35)
 - **Important note:**
 - In the new firmware you can set the ICMP to On or Off in the local UI menu 'Network-TCP/IP'
 - ICMP must set to **On** to get the DVR connected to a CC version 3.34 or older because in this version of Control Center the ICMP is required
 - In the new Control Center version 3.35 the ICMP is not required anymore, therefore in this CC version you can set ICMP to **Off** in the local UI menu 'Network-TCP/IP'
- Email notification with a 10 seconds video clip (10 pictures, iFrame only)
- Low bandwidth support by selecting 256/512kbps bandwidth throttle (iFrame only mode when selecting bandwidth of 256 or 512kbps in local UI)
- PAL or NTSC video format detection is improved (user will be clearly notified when video format of DVR don't match with video format of connected cameras).
- Improve PTZ handling in full screen (you can select Menu, Search, Export or Exit when PTZ control is active)
- Video playback from HDD mounted in other DVR600 (possible to move complete HDD set from one to another DVR600)
- Avoid invalid log-on when user ID is used special characters like /:@ (In this firmware these characters are grayed out and cannot be selected)
- Give warning/possible to cancel before delete video after video format (NTSC/PAL) change

This release includes the following bug fixes were below issues are solved:

- It is possible to use AUX on/off function in Control Center version 3.35
- Correct AM/PM setting using export via web when DVR is set in 24h mode
- Dome never stop moving if using PTZ control and drag mouse point
- Recording channel led off if used HDD is not certified