



Installation Manual

REV 4 & CUSTOM KIT



WELCOME

ievo would like to thank you for purchasing our product. **This manual is designed to make the installation of our superior biometric reader quick, easy and efficient. Please ensure you check all of the points listed below and read through the manual before commencing with your installation. ievo would also recommend making use of the End User guides that are supplied with the reader. These can help train users of the system to eradicate any finger placement issues.**

For more End User guides or posters please contact us (Contact details can be found at the back of this manual).

Power:

ievo advise the use of a **Surge protected, 12v to 24v, AC (Alternating current) or DC (Direct Current), 2Amp PSU. If using two power supplies please ensure they are grounded together. ievo also recommend using a backup battery in case power is lost/ power cut.** Ensure you have calculated the correct power supply amp rating if you are connecting the ievo board and other controllers/ locking mechanisms to the same supply, **ievo reader <600mA per head unit.** The ievo unit must be used with an EN 60950-1 or an equivalent IEC standard complaint PSU. This is to establish adequate safety testing of the PSU to ensure that there is sufficient isolation provided from the mains. ievo is designed to shut down as a protection precaution when spikes or noise on line is detected. ievo will reboot straight away after shutdown. The use of a correct power supply will prevent this from taking place.

Warning: When installing the ievo control box, follow ESD Safety Procedures.

Ground yourself to prevent any damage to the electronic components.

Installation:

Ensure you have selected the correct reader for internal or external use. The external reader is supplied with a built in thermostat controlled heating system. An internal reader, placed externally will not perform to its required capabilities.

If you are fitting a flush mounted reader ensure you have the correct cut out template and have the correct mounting and fixing plates provided in the box. ievo also recommend that you install the ievo reader at the DDA height of between 1.00m and 1.20m. This will be the perfect height for finger placement.

Ensure that the control box is installed on the protected side of the door/turnstile.

The control box is not IP rated, it can be installed inside the power supply unit.


Network:

Only use CAT5e STP (Shielded) Cable or above for network communication.

Each ievo reader needs its own network cable, as each reader has its own IP address. Each head unit also requires a CAT5e or above connection to the ievo control board. Ensure this has been taken into consideration before commencing with installation. ievo also recommend using a **NetGear router**. Please see network pages for further information

Manual:

Please ensure you read all of the information notices in this manual before commencing installation.

These are indicated with a yellow triangle. 

Ensure you read the software setup section to help configure each of your ievo readers.

ievo has been designed to integrate into other manufacturers controllers and control boards. Our software has also been integrated to ensure a smooth and seamless operation for the end user. We can support you with our software and hardware but we are unable to support you with other manufacturers hardware and software.

Please ensure you contact the correct manufacturer if you require assistance.

Note: ievo is an independent company and manufacturer of ievo products only. Although ievo has integrated into other manufacturers products with their consent, ievo has no affiliation nor representations of the companies we have integrated into. All companies that we have integrated into have no affiliation or representations of ievo. None of the companies that we have integrated into have endorsed ievo in anyway nor do they have any legal attachment to any claims made by ievo. ievo has no legal attachments to any claims made by the companies we have integrated into.



Please read this manual, It will help guide you through installing the ievo reader and software

INTRODUCTION:

This Manual will cover the following areas in detail:

- Installation
- Standards/Support

The minimum specs for your PC should be:

CPU:	Dual Core 2.0+ GHz (or equivalent)
Hard Drive:	10 GB
Memory:	2 GB
Network:	NIC (Static IP)
Microsoft .NET:	Version 4.0 or greater.
OS:	Windows XP SP3, Vista, Windows 7. (32bit / 64bit), Windows 8 (32bit /64bit)

To get the best performance from our software, please make sure your PC meets our minimum specification. Please be aware that antivirus software can sometimes conflict with network communication.



CONTENTS:

Page 2:	Welcome
Page 3:	Introduction
Page 4:	Contents

Page 5: **INSTALLATION**

Page 6:	Installation Notes
Page 7:	ievo Wiring Example
Page 8:	Surface Mount Installation
Page 9:	Wiring Diagram
Page 10:	Net 2 Wiegand Diagram
Page 11:	ACT Wiegand Diagram
Page 12:	BSB Wiegand Diagram
Page 13:	Siemens Entro Wiegand Diagram
Page 14:	Network Example
Page 15:	Installing the ievo software
Page 16:	Installing the USB drivers
Page 17:	Installing the USB drivers Part 2
Page 18:	Installation Complete

Page 19: **STANDARDS**

Page 20:	Support
----------	---------



Installation

Internal Use Only



Importance of the reader list

The reader list refers to the settings window located within ievo software
(*Please refer to software manual for further help*)

This is just a list. Adding, editing or deleting does not affect any network settings of the readers connected to the network. This is so you can connect remote readers to the system with out accidentally changing the network settings.



To change the network settings of a reader you must run the ievo network settings tool. Once the network settings of the reader has been changed. The reader can then be added to this list.

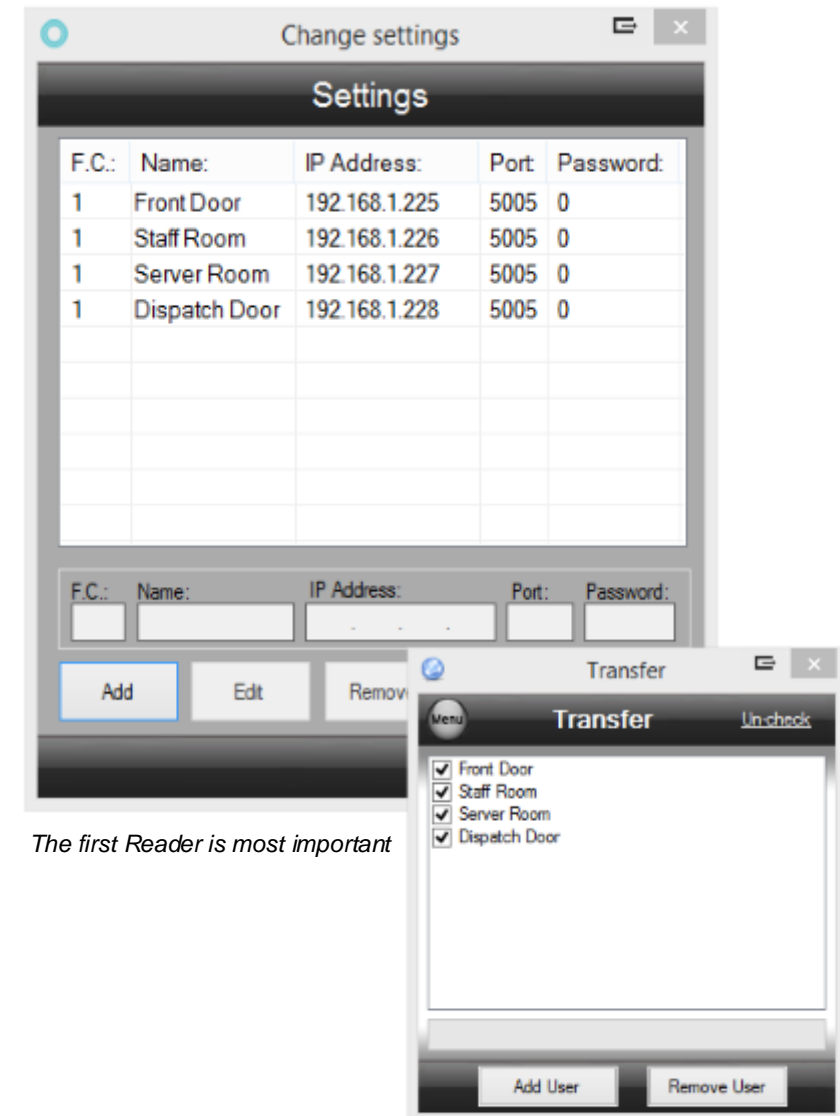
The first reader in the list is the most important reader on the system.

This reader is the master reader where all registration is carried out.

All users must be enrolled on the first reader.

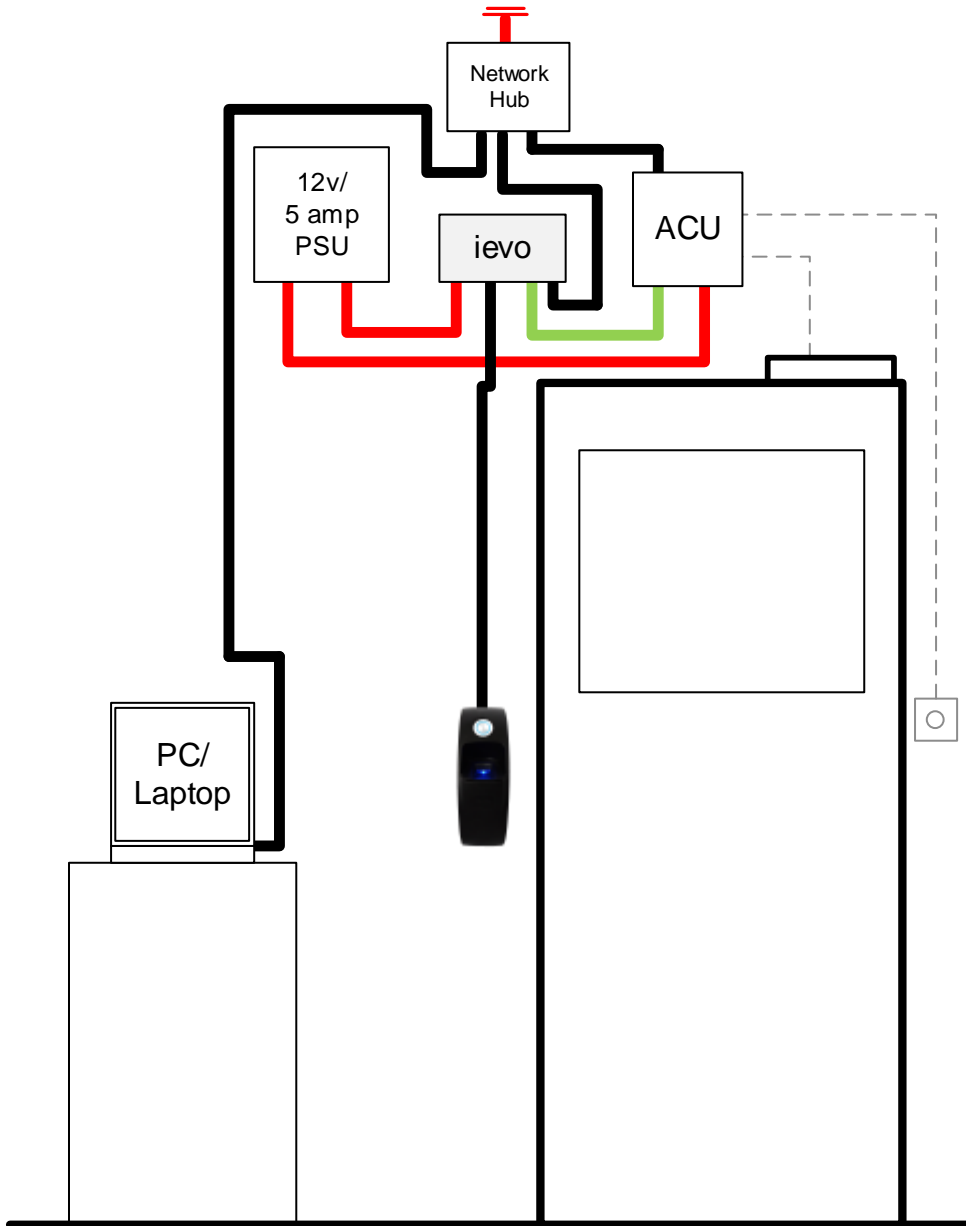
You must then transmit the newly registered user to the first reader in the reader list. If a user is not transmitted to this reader then they will be overwritten by the next user registered. If this reader is in constant use please be aware that there will be down time (less than a second) whilst registration is in progress.

If you do not want to send all users to the first reader in the list or experience down time on this reader then please adjust the first reader in the list to another reader, alternatively you can purchase an ievo control board (black box, without reader head) which can be assigned as the first reader in the list (registration reader) and transmit all users to this reader. Due to the fact no reader head is attached it will not affect performance or access rights to your system.



The first Reader is most important

First reader must be ticked if not sending to all readers.



KEY:

Cable:

ievo connections:

Power (2 core)

Wiegand (3 core)
Using iev0 LED relay? (6 core)

Ethernet
(Minimum CAT5e)

ievo controller is **NOT** IP rated.
Please secure inside an IP65
secure box.

Please refer to manufacturer ACU manual for correct installation of ACU board.

ievo control board and ACU must be installed internally.

ievo recommend that you do not use the same power supply to power locks. If you are using multiple power supplies, make sure to ground them all together.

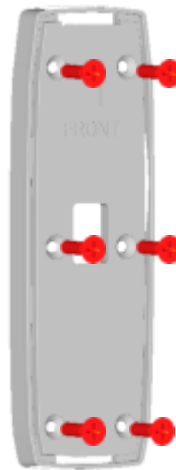
ievo SURFACE MOUNTED INSTALLATION




Ensure you are installing the reader indoors.

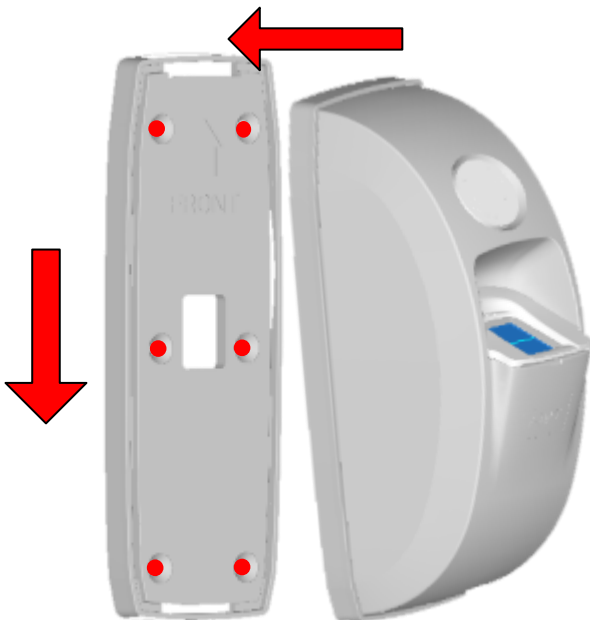
Do not remove any of the security labels as this will void all warranties.

- 1 Use 6 screws to attach the micro wallplate provided to the wall.



 Ensure you use the correct fixing plug for the type of wall you are fixing the reader to. Incorrect usage will result in the reader being unsecure. Plaster board will require correct brackets for installation.

- 2 Once the plate is attached to the wall, tilt the micro head unit back and clip it onto the back plate. Once attached at the top of the unit, slide the rest of the head onto the plate.



- 3 Once the head unit is attached on to the backplate, push against the head unit until you hear the security clips click into place.



NEED HELP?

You can call us between 9.00am and 5.30pm GMT Monday to Friday on 08456436632 or if you are overseas on +44(0)1912963623. Alternatively you can email us at support@ievoreader.com



WIRING DIAGRAM

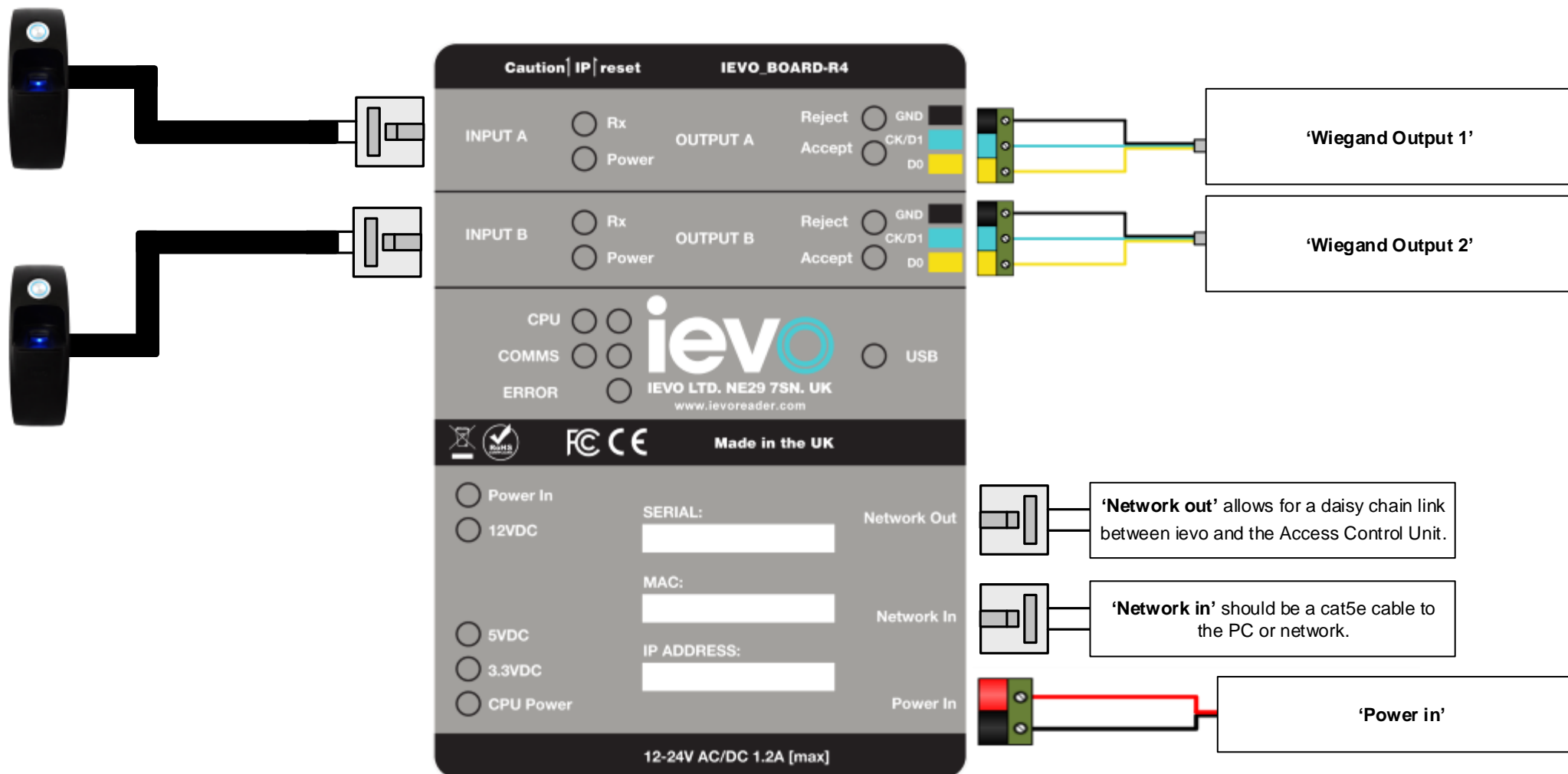


Please use Belden 9534 (4 Core shielded) twist 2 pairs for clock and data and use shield for GND for long cable runs.

NOTE: If using ievo LED controller (6 core shielded)

RS Part number: 382-510

MAXIMUM DISTANCE UPTO 100 METRES



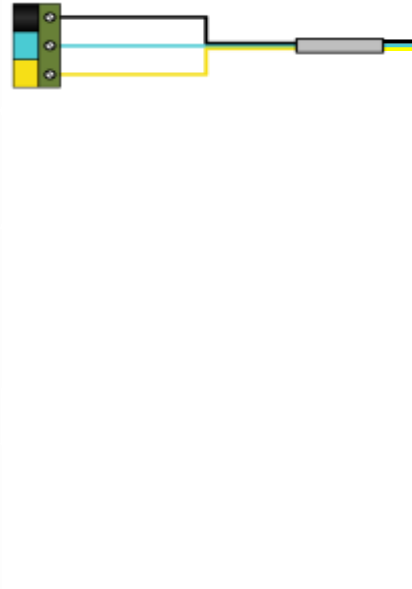
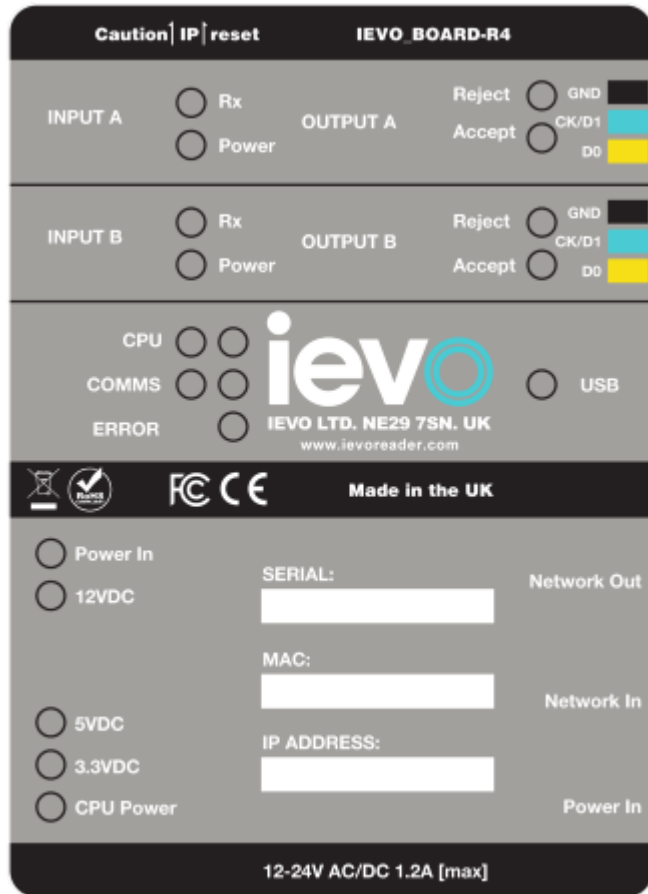
NEED HELP?

You can call us between 9.00am and 5.30pm GMT Monday to Friday on 08456436632 or if you are overseas on +44(0)1912963623. Alternatively you can email us at support@ievoreader.com

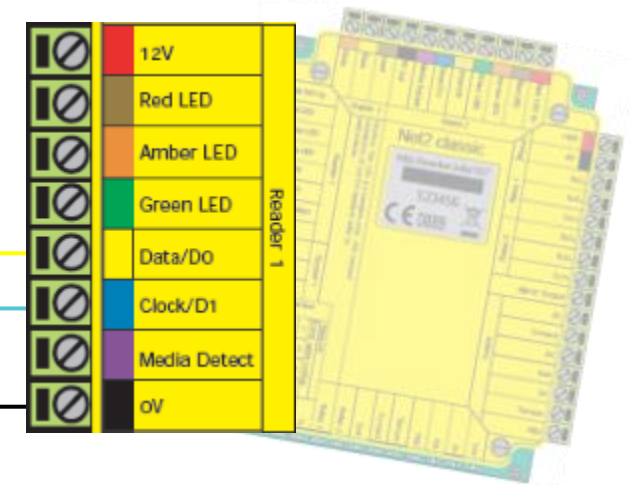
Warning: When installing the ievo control box, follow ESD Safety Procedures. Ground yourself to prevent damage to the any electronic components. If using ievo LED controller, please use a 6 core shielded cable for Wiegand.



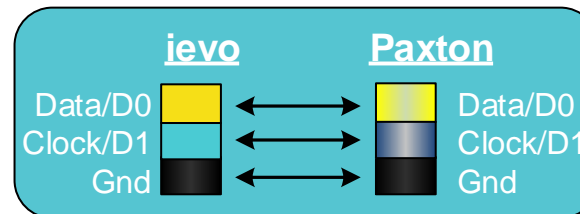
WIEGAND DIAGRAM FOR PAXTON NET2



Net2 Classic/Plus/Nano Controller



KEY:

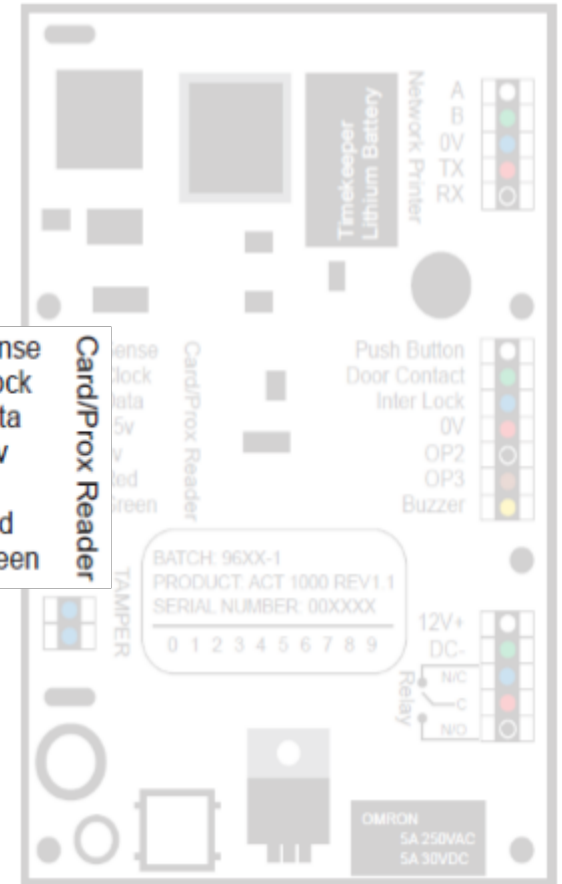
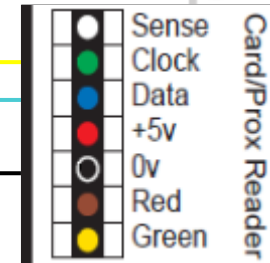
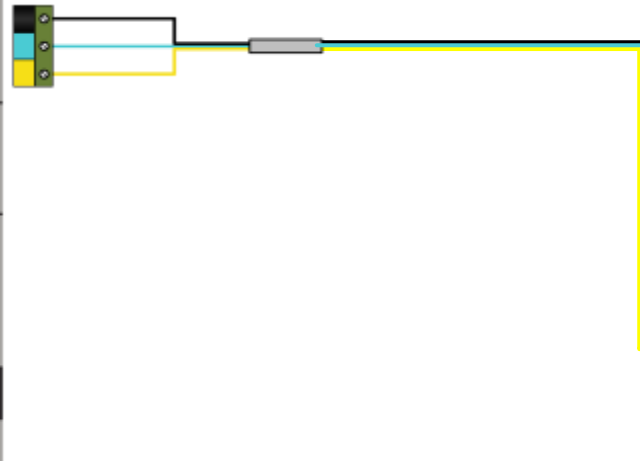
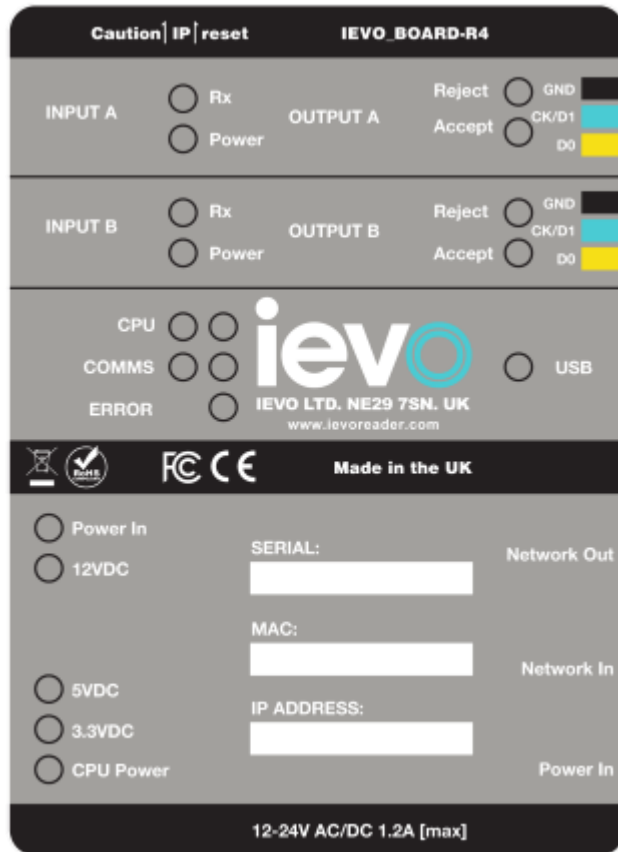


NEED HELP?

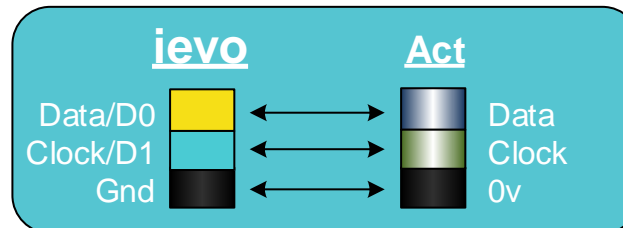
You can call us between 9.00am and 5.30pm GMT Monday to Friday on 08456436632 or if you are overseas on +44(0)1912963623.
Alternatively you can email us at support@ievoreader.com

WIEGAND DIAGRAM FOR ACT

ACT-1000/2000/3200 Door Controller



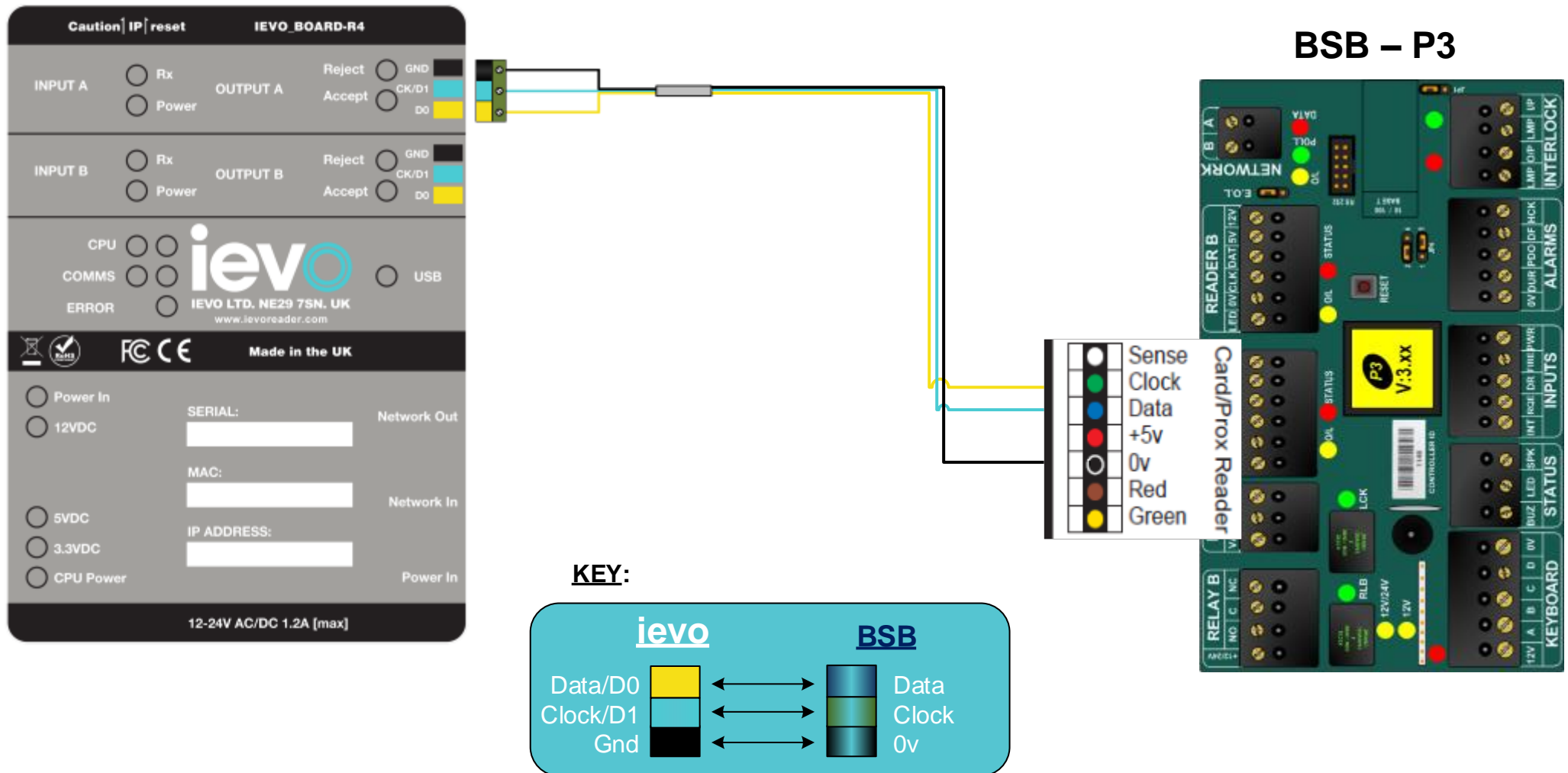
KEY:



NEED HELP?

You can call us between 9.00am and 5.30pm GMT Monday to Friday on 08456436632 or if you are overseas on +44(0)1912963623.
 Alternatively you can email us at support@ievoreader.com

WIEGAND DIAGRAM FOR BSB

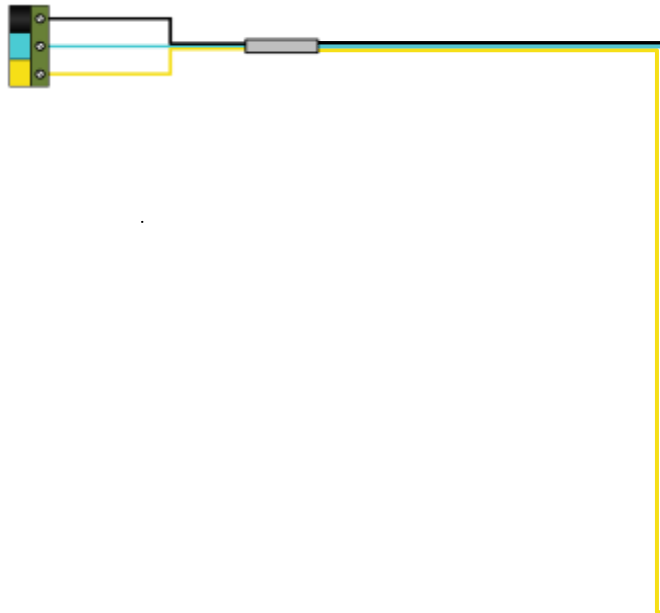
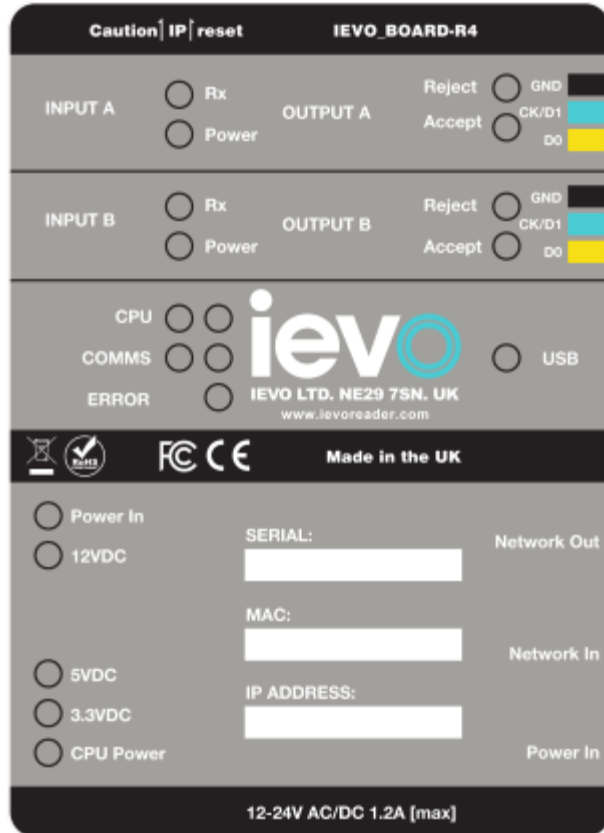


NEED HELP?

You can call us between 9.00am and 5.30pm GMT Monday to Friday on 08456436632 or if you are overseas on +44(0)1912963623. Alternatively you can email us at support@ievoreader.com



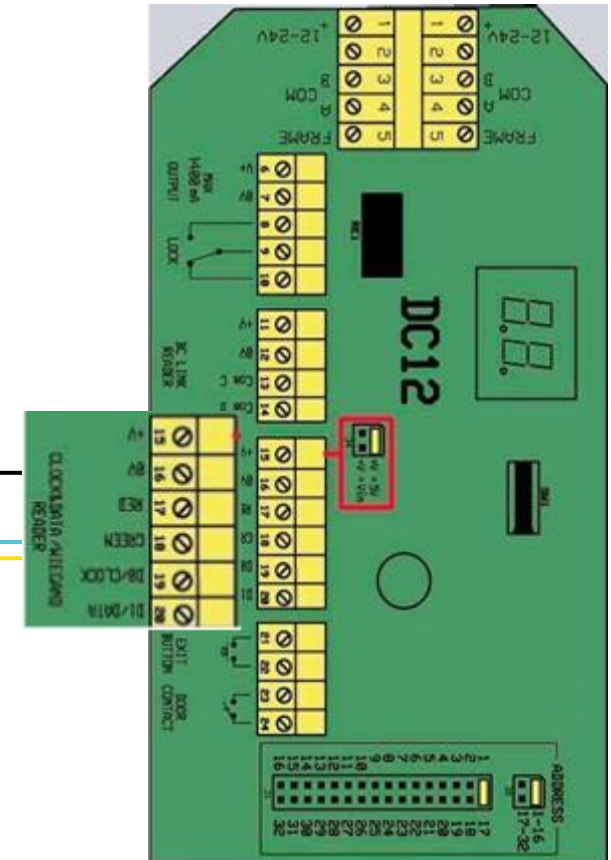
WIEGAND DIAGRAM FOR SIEMENS ENTRO



KEY:

ievo		SIEMENS
Data/D0		19 D0/Clock
Clock/D1		20 D1/Data
Gnd		16 0V

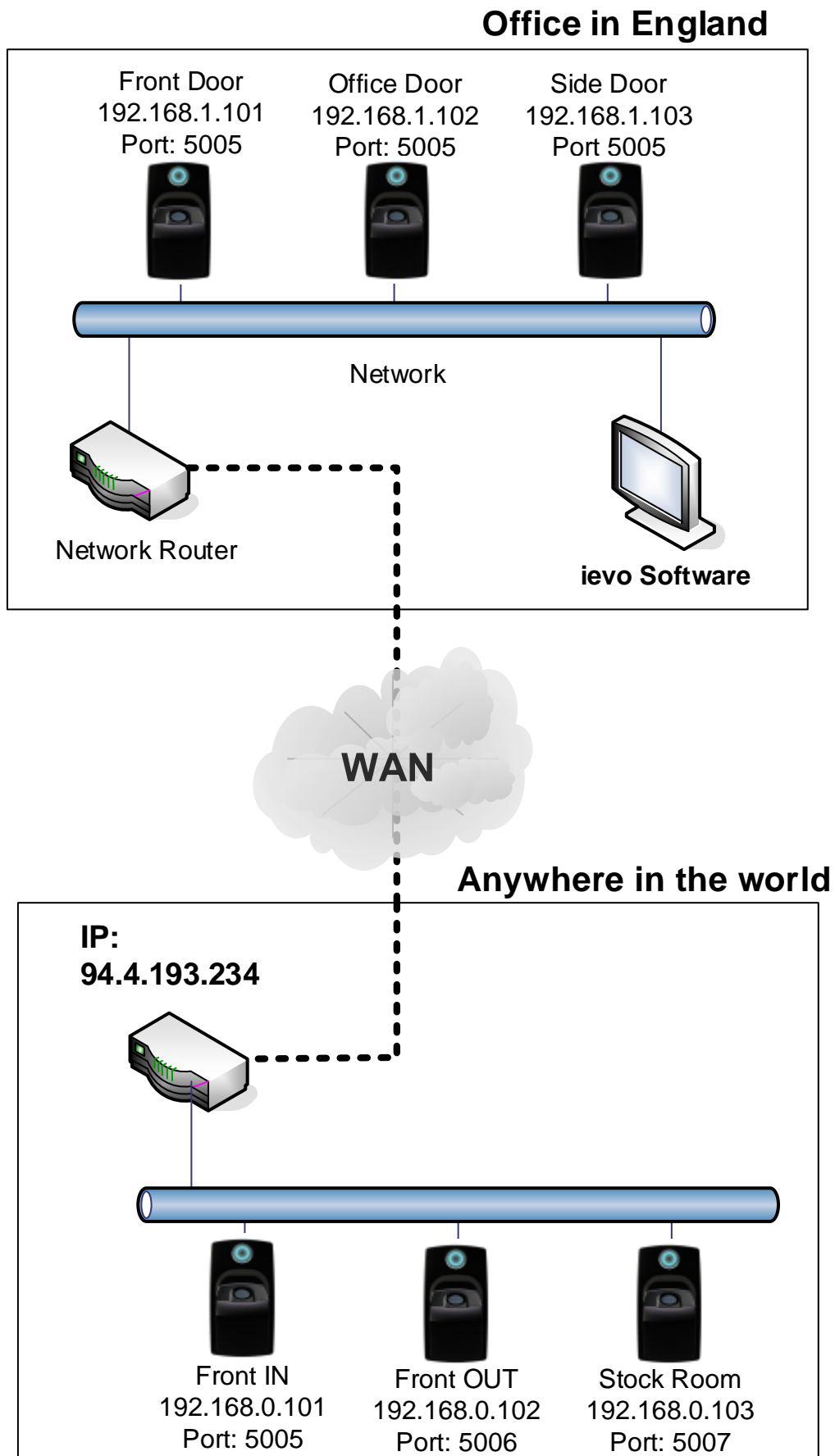
DC12 / DC22 Door controller



NEED HELP?

You can call us between 9.00am and 5.30pm GMT Monday to Friday on 08456436632 or if you are overseas on +44(0)1912963623.
Alternatively you can email us at support@ievoreader.com

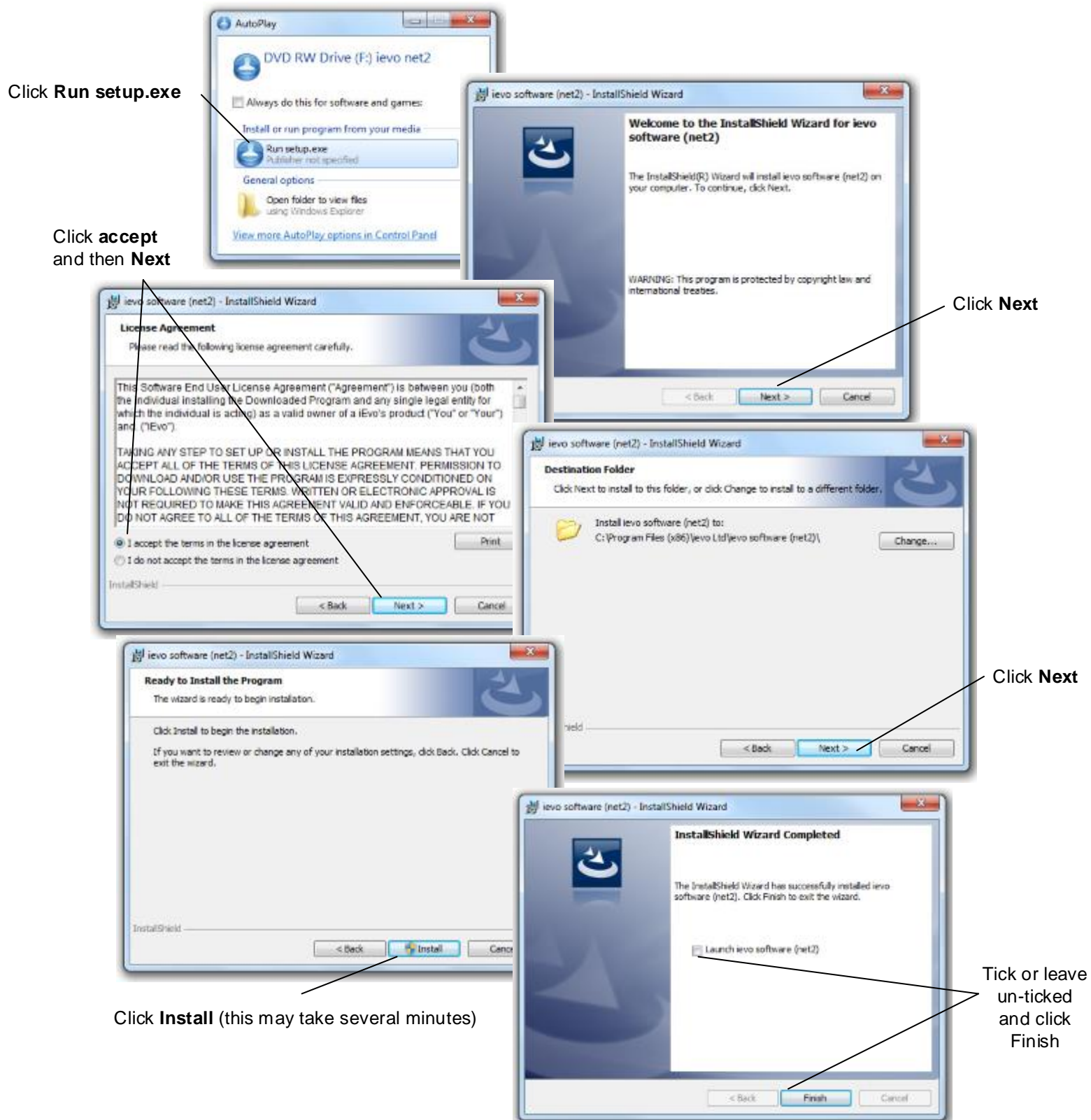
NETWORK EXAMPLE



INSTALLING IEVO SOFTWARE

Please ensure your operating system is up to date, this can be done by clicking start on the bottom left hand side of your computer screen, right click on "computer" and click properties. From here you should see an option called "Windows Update"

Please insert the ievo disk into your computer and wait for the autoplay window to pop up .



Click **Run setup.exe**

Click **accept** and then **Next**

Click **Next**

Click **Next**

Click **Next**

Click **Install** (this may take several minutes)

Tick or leave un-ticked and click **Finish**

ievo will now be installed. If you did not tick the "Launch ievo software" option, open the software by going to your desktop.
NOTE: To use ievo you must first install your Third party software - unless you are running ievo Standalone version.

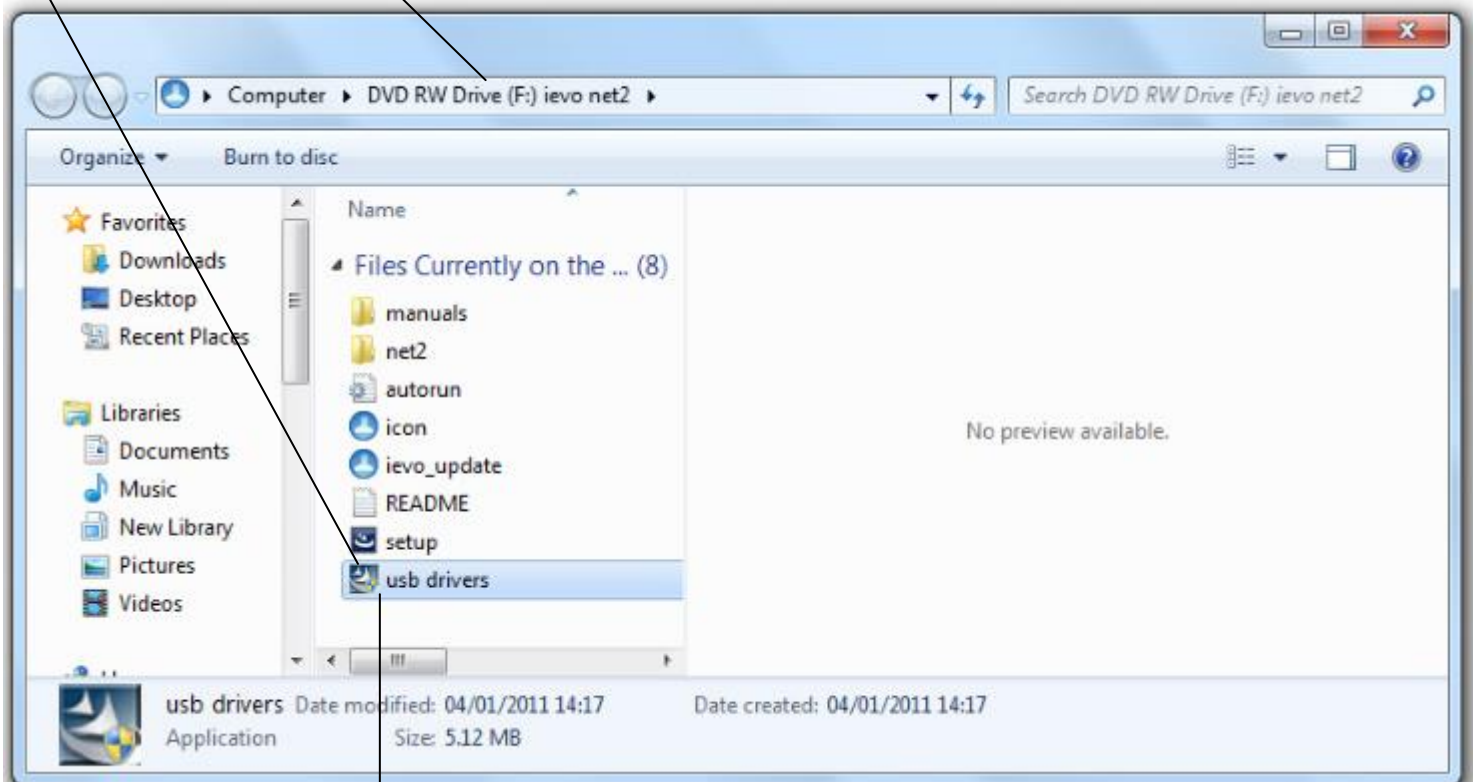
INSTALLING USB DRIVERS

NOTE: This section of installation is only required if you have purchased a USB registration unit, if not please skip.

Please insert the ievo disk into your computer

1) Go to “computer” and browse to your local disk drive

2) Run “usb drivers.exe”



Running this will take you to the next screen, please turn over to the next page

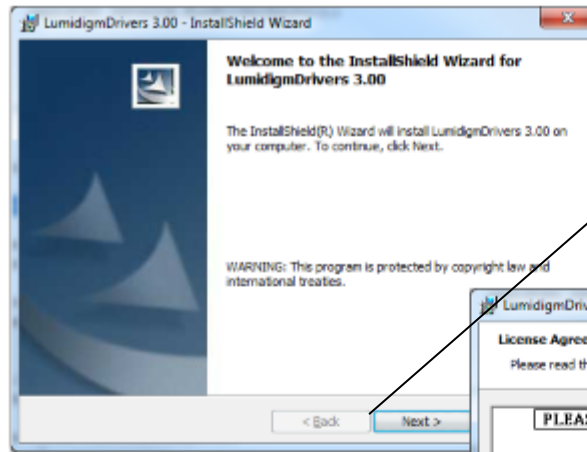


NEED HELP?

You can call us between 9.00am and 5.30pm GMT Monday to Friday on 08456436632 or if you are overseas on +44(0)1912963623. Alternatively you can email us at support@ievoreader.com

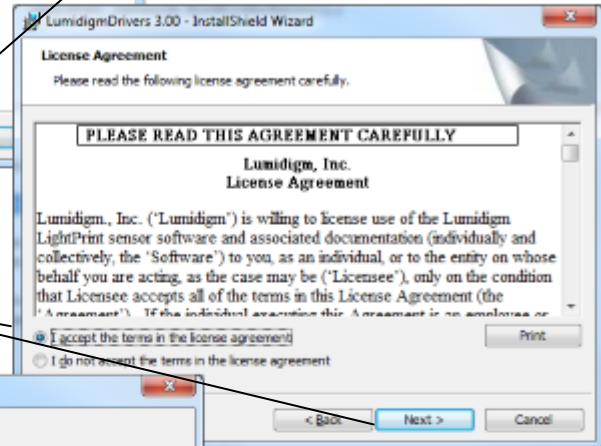
Please follow these steps

NOTE: This section of installation is only required if you have purchased a USB registration unit, if not please skip and see next page.



1) Click **Next**

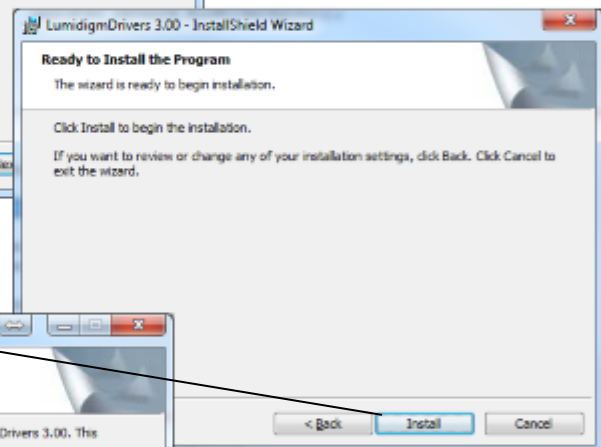
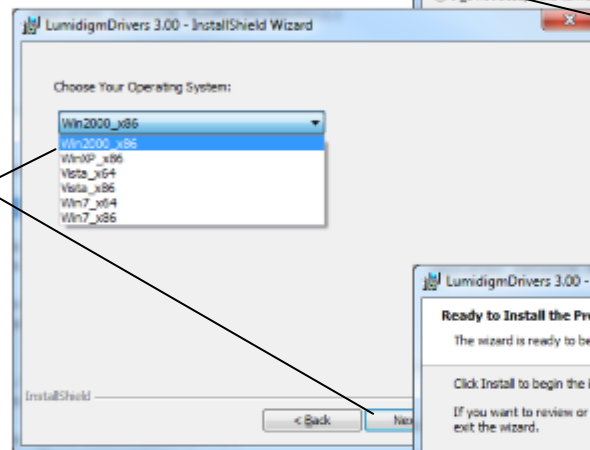
2) Tick **"Accept"** and then **Next**



Choose which operating system you are running and click **Next**

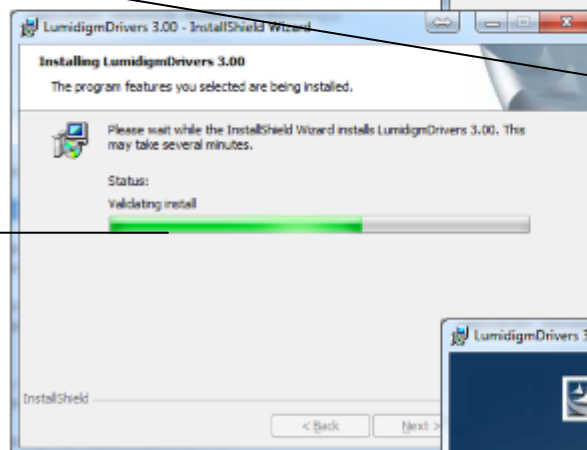
To find out which operation system you are running, click the windows start button on the bottom left of your screen and right click on "computer", click properties. This will be labelled as **System Type**:

Windows 32bit = drivers x86
Windows 64bit = drivers x64

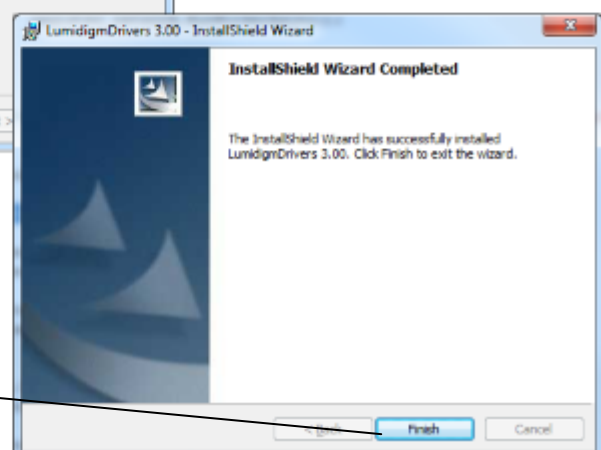


Click **Install**

Please wait whilst the drivers are installed



Installation is now complete, now click **Finish**





INSTALLATION COMPLETE








Congratulations you have now completed the installation of the ievo reader, please remember that you may need to install your third party software unless you are using the ievo standalone version of our software. Once complete please move onto our **software manual** for help on setting up and using your ievo reader.



NEED HELP?

You can call us between 9.00am and 5.30pm GMT Monday to Friday on 08456436632 or if you are overseas on +44(0)1912963623.
Alternatively you can email us at support@ievoreader.com

STANDARDS

No	Symbol	Meaning
1		Open Book Please refer to the user manual.
2		Caution For the safety of yourself and others please refer to the user manual for specific instructions on using this product.
3		Anti-Static Discharge Please follow ESD safety procedures. Ground yourself to avoid any damage to the electrical components.
4		Restriction of Hazardous Substances The restriction of the use of certain hazardous substances in electrical and electronic equipment.
5		Waste Electrical and Electronic Equipment When discarding of this product, please send to separate collection facilities for recovery and recycling. Separating from other household-type waste.
6		European Conformity Conforms with the essential requirements of the applicable European Conformity directives.
7		Federal Communications Commission Government agency established by the Communications Act of 1934 which regulates all interstate communications.



ievo Contact support:

TeL (UK): 0845 643 6632 or
Overseas: +44 (0)1912963623
Email: support@ievoreader.com
Web: www.ievoreader.com/support
Help & Support: For Support please click Menu on the user list and click Help & Support

ievo address:

Address:

ievo Ltd.
Unit 5, Orion Business Park, Mercury Court
Tyne Tunnel Trading Estate
Newcastle upon Tyne
Tyne And Wear
NE29 7SN